

# 02G150j-45-15

## Construction And Materials

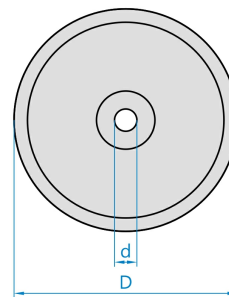
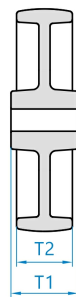
09.03.2023



Wheel centre material	fibre-glass reinforced polyamide
Bearing	plain
Tread material	fibre-glass reinforced polyamide
Tread hardness	80 ShD
Non-marking tread	yes
Threadguard	
Weight	0,29 kg

Illustrative picture

## Dimension Sketch



## Basic Dimensions

D	150 mm
T2	40 mm
T1	45 mm
d	15 mm

## Properties

Dynamic load capacity	600 kg
Max. speed	4 km/h
Control type	manual
Non-marking tread	yes
ESD version	no
Amagnetic version	no
Temp. max.	+150°C
Temp. min.	-40°C
Standard	EN 12532